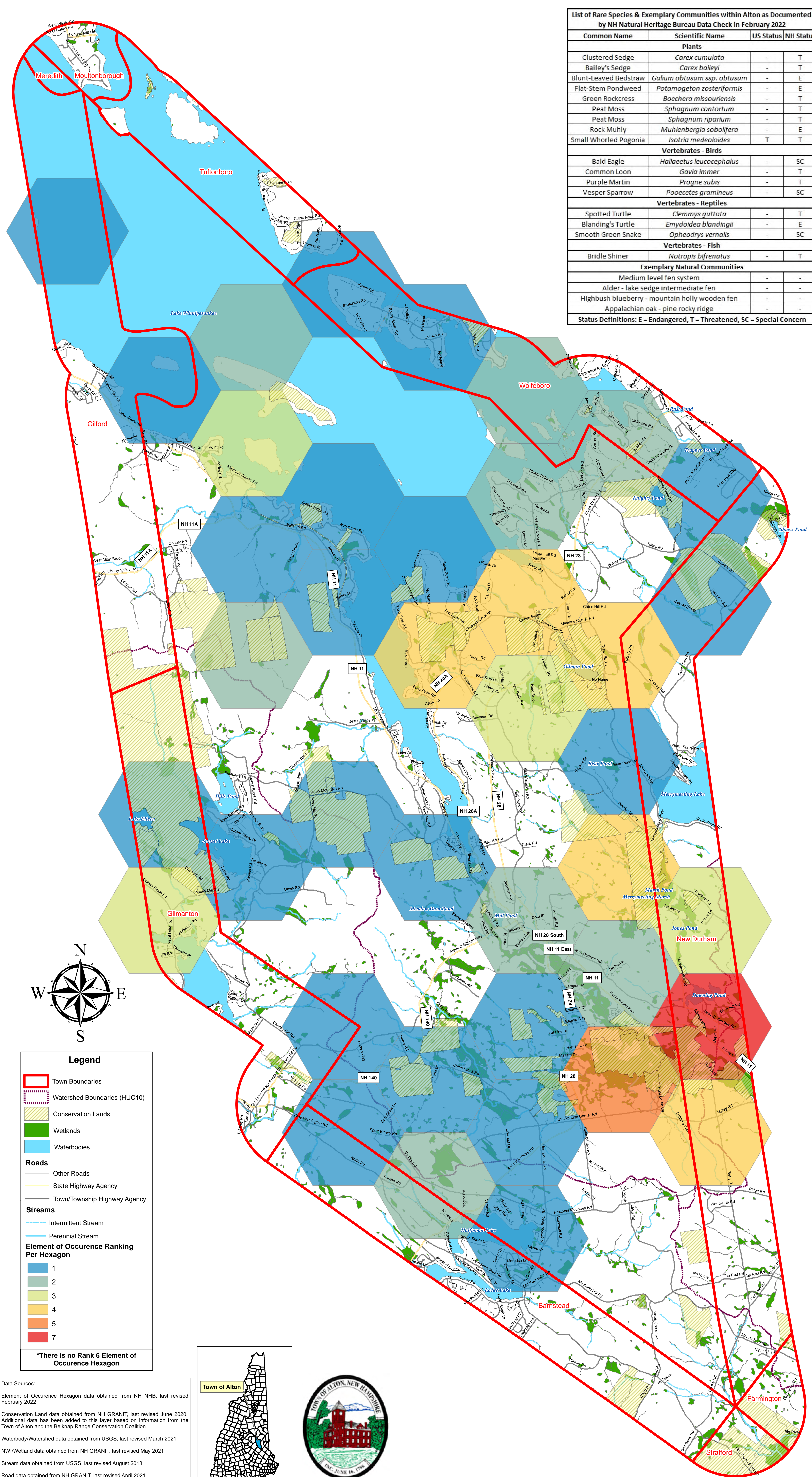


New Hampshire Natural Heritage Bureau Element of Occurrence Hexagon Analysis

List of Rare Species & Exemplary Communities within Alton as Documented by NH Natural Heritage Bureau Data Check in February 2022

Common Name	Scientific Name	US Status	NH Status
Plants			
Clustered Sedge	<i>Carex cumulata</i>	-	T
Bailey's Sedge	<i>Carex baileyi</i>	-	T
Blunt-Leaved Bedstraw	<i>Galium obtusum ssp. obtusum</i>	-	E
Flat-Stem Pondweed	<i>Potamogeton zosteriformis</i>	-	E
Green Rockcress	<i>Boechera missouriensis</i>	-	T
Peat Moss	<i>Sphagnum contortum</i>	-	T
Peat Moss	<i>Sphagnum riparium</i>	-	T
Rock Muhly	<i>Muhlenbergia sobolifera</i>	-	E
Small Whorled Pogonia	<i>Isotria medeoloides</i>	T	T
Vertebrates - Birds			
Bald Eagle	<i>Haliaeetus leucocephalus</i>	-	SC
Common Loon	<i>Gavia immer</i>	-	T
Purple Martin	<i>Progne subis</i>	-	T
Vesper Sparrow	<i>Pooecetes gramineus</i>	-	SC
Vertebrates - Reptiles			
Spotted Turtle	<i>Clemmys guttata</i>	-	T
Blanding's Turtle	<i>Emydoidea blandingii</i>	-	E
Smooth Green Snake	<i>Opheodrys vernalis</i>	-	SC
Vertebrates - Fish			
Bridle Shiner	<i>Notropis bifrenatus</i>	-	T
Exemplary Natural Communities			
Medium level fen system		-	-
Alder - lake sedge intermediate fen		-	-
Highbush blueberry - mountain holly wooden fen		-	-
Appalachian oak - pine rocky ridge		-	-

Status Definitions: E = Endangered, T = Threatened, SC = Special Concern



Legend

- Town Boundaries
- Watershed Boundaries (HUC10)
- Conservation Lands
- Wetlands
- Waterbodies

Roads

- Other Roads
- State Highway Agency
- Town/Township Highway Agency

Streams

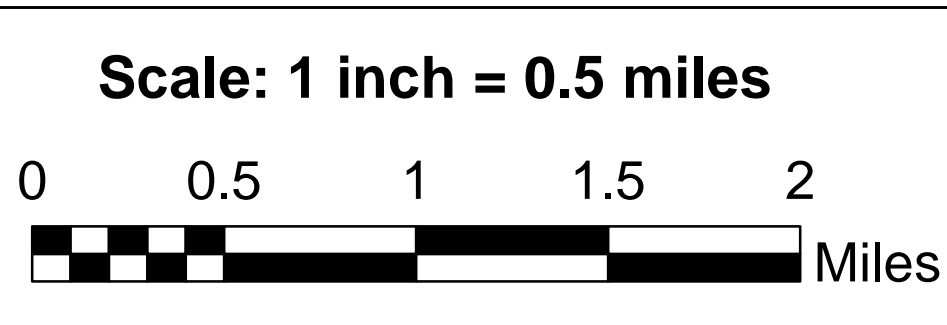
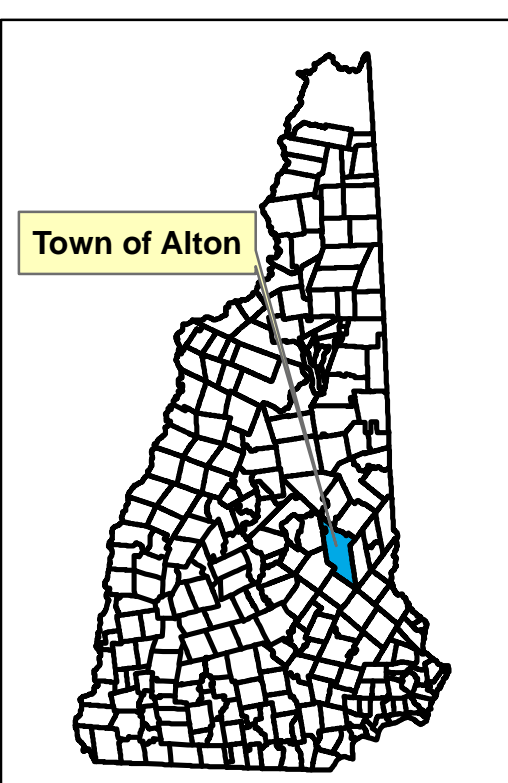
- Intermittent Stream
- Perennial Stream

Element of Occurrence Ranking Per Hexagon

- 1
- 2
- 3
- 4
- 5
- 7

*There is no Rank 6 Element of Occurrence Hexagon

Data Sources:
 Element of Occurrence Hexagon data obtained from NH NHB, last revised February 2022.
 Conservation Land data obtained from NH GRANIT, last revised June 2020. Additional data has been added to this layer based on information from the Town of Alton and the Belknap Range Conservation Coalition.
 Waterbody/Watershed data obtained from USGS, last revised March 2021.
 NWI/Wetland data obtained from NH GRANIT, last revised May 2021.
 Stream data obtained from USGS, last revised August 2018.
 Road data obtained from NH GRANIT, last revised April 2021.
 Town boundary data obtained from NH GRANIT, last revised April 2013.



NH NHB Element of Occurrence Hexagon Analysis - Alton NRI Map
 Created: February 22, 2022
 Last revised: October 6, 2022
 Prepared for the Town of Alton, NH
 This map should only be used for planning purposes, not for legal bound interpretation.

Stoney Ridge Environmental, LLC
 8 Kiana Road
 Alton, NH 03809
 Phone: 603-776-5825